



ABOUT COMPANY

BK Technic produces high precision collets for Swiss Type CNC Lathes.

BK Technic enhances holder systems of Swiss Type CNC Lathes with experience and knowledge.

Besides high technology production, BK Technic marks a new period of collets by collaborating with leader Swiss Type CNC Lathe manufacturers.

High precision quality collets provide savings from cost and time.

BK Technic is capable of producing collets for all models of Swiss Type CNC Lathe.

Our products:

- *Main and Sub Spindle Collets*
- *Special Collets*
- *Guide Bushes*
- *Barfeeder Collets*
- *Sleeves*
- *Toggle (Chuck Lever)*
- *Broaching Heads*

BK Technic adapts new technologies and innovations for developing range of products. For high quality, **BK Technic** always works openly to innovations.

**Main Spindle & Sub Spindle Collet
Chuck (Radial Grooves-Smooth)**



6-7

Guide Bush



8-9

**TSUGAMI - CITIZEN Guide
Bushes-Main & Sub Spindle Collet**



10-11

**STAR-HANWHA-NEXTURN Guide
Bushes-Main & Sub Spindle Collet**



12-13

**TORNOS-GOODWAY-NOMURA
Guide Bushes-Main & Sub Spindle
Collet**



14-15



Main Spindle Collet Chuck - Radial Grooves



Sub Spindle Collet Chuck - Smooth



Guide Bush



Clamping Tools

Broaching Head Series



Chuck Lever (Toggle)



Barfeeder Collet

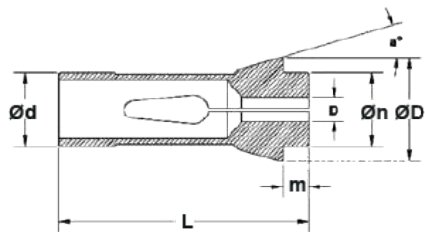


Barfeeder Collet



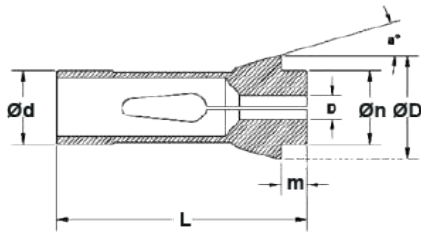
Barfeeder Collet



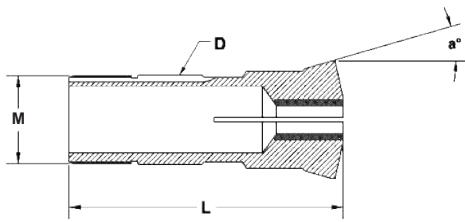


Capacity

Part Nr.	Guiding Dia	Major Dia	Total Length	Nose Length	Nose Dia	Angle	Capacity		
	Ød	ØD	L	m	Øn	a°	Round	Hexagon	Square
BK-F7.26/107-15	7	10,7	26	2,9	7	15°	4,5	3	3
BK-F7.26/105-15	7	10,5	26	3	7	15°	4,5	3	3
BK-F8.42/12-16	8	12	42	4,5	8	16°	5,5	4	3
BK-F8.41/12-16	8	12	41	3,5	8	16°	4,5	3	3
BK-F10.475/155-20	10	15,5	47,5	5,5	10	20°	7	5	4
BK-F10.46/16-20	10	16	46	4	10	20°	7	5	4
BK-F10.47/16-20	10	16	47	5	10	20°	7	6	5
BK-F10.43/15-15	10	15	43	5	10	15°	6,5	5	4
BK-F12.445/181-15	12	18,1	44,5	4,3	12	15°	8	6	5
BK-F12.64/18-16	12	18	64	6	12	16°	8	6	5
BK-F13.64/19-16	13	19	64	6	13	16°	10	8	7
BK-F14.46/18-13	14	18	46	4	14	13°	10	8	7
BK-F15.47/22-20	15	22	47	5	15	20°	10,5	9	7
BK-F15.64/21-16	15	21	64	6	15	16°	11	9	8
BK-F15.455/20-15	15	20	45,5	2,5	15	15°	10	8	7
BK-F15.64/21-16	15	21	64	6	17,5	16°	11,5	9	8
BK-F16.55/22-15	16	22	55	5	16	15°	12	10	8
BK-F16.64/21-16	16	21	64	6	16	16°	12	10	8
BK-F16.62/21-16-01	16	21	62	4	16	16°	12	10	8
BK-F16.62/21-16-02	16	21	62	4	16	16°	12	10	8
BK-F18.67/25-15	18	25	67	7	19,5	15°	14	11	9
BK-F20.67/28-16	20	28	67	7	21	16°	16	13	11
BK-F20.60/275-15	20	27,5	60	5	20	15°	16	13	11
BK-F20.54/26-15	20	26	54	5	19	15°	16	13	11
BK-F20.67/26-16	20	26	67	3	19	16°	16	13	11
BK-F22.66/32-16	22	32	66	7	25	16°	17	15	12
BK-F23.862/28-15	24	28	62	7	22	15°	18	15	12
BK-F24.62/28-15	24	28	62	7	22	15°	17	15	12
BK-F25.77/35-16	25	35	77	10	27	16°	20	17	14
BK-F2565/34-15	25	34	65	6	25	15°	20	17	14
BK-F25.85/35-16	25	35	85	18	27	16°	20	17	14

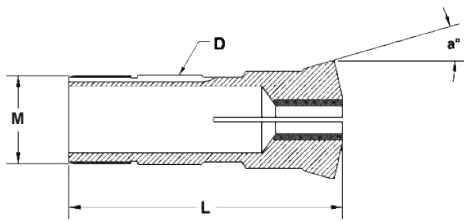

Capacity

Part Nr.	Guiding Dia	Major Dia	Total Length	Nose Length	Nose Dia	Angle	Round	Hexagon	Square
	Ød	ØD	L	m	Øn	a°	●	⬡	■
BK-F25.77/35-16	26	35	77	5	27	16°	20	17	14
BK-F26.67/32-13	26	32	67	7	27,5	13°	20,5	17	14
BK-F26.67/36-15	27	36	67	7	28	15°	20,5	17	14
BK-F27.727/38-15	28	38	72,7	8	30	15°	23	19	16
BK-F28.70/38-15	28	38	70	7	28	15°	23	19	16
BK-F28.77/35-16	30	35	77	10	27,5	16°	22,5	19	16
BK-F30.80/42-16	30	42	80	10	34	16°	25	21	17
BK-F30.65/38-15	30	38	65	6	32	15°	25	21	17
BK-F30.80/42-16	30	42	80	12	32	16°	25	22	18
BK-F30.78/42-16	32	42	78	10	32	16°	25	22	18
BK-F32.65/40-15	33	40	65	6	34	15°	26	22	18
BK-F33.80/40-16	37	40	80	12	32	16°	28	24	20
BK-F37.92/47-16	40	47	92	10	40	16°	32	27	22
BK-F40.92/50-16	44	50	92	10	43	16°	35	30	24
BK-F44.92/52-1630	44,4	52	92	10	44	16°30	38	32	27
BK-F44.4.64/545-15	17	54,5	64	8,5	42	15°	37	31	26
BK-F17.46.51/22-15	22	22	51	5	16	15°	13,5	11	9
BK-F22.55/30-15	32	30	55	6	21	15°	16,5	14	11
BK-F32.75/45-15	35	45	75	8	34	15°	26	22	18
BK-F35.80/48-15	37	48	80	8	38	15°	30	25	21
BK-F37.91/44-16	38	44	91	5,7	38	16°	32	27	22
BK-F38.08.1075/49-15	42	49	107,5	9	38	15°	32	27	22
BK-F42.94/55-15	43	55	94	9	42	15°	36	30	25
BK-F43.92/53-16	43	53	92	10	46	16°	38	33	27
BK-F43.92/53-15	48	53	92	10	42	15°	35	30	25
BK-F48.100/54-15	48	54	100	10	44	15°	39	34	28
BK-F48.94/60-15	48	60	94	9	50	15°	42	36	29
BK-F48.100/54-15	58	54	100	10	44	15°	41	35	29
BK-F58.94/70-15-01	58	70	94	9	60	15°	51	44	36
BK-F66.110/84-15	66	84	110	9	73	15°	59	48	39



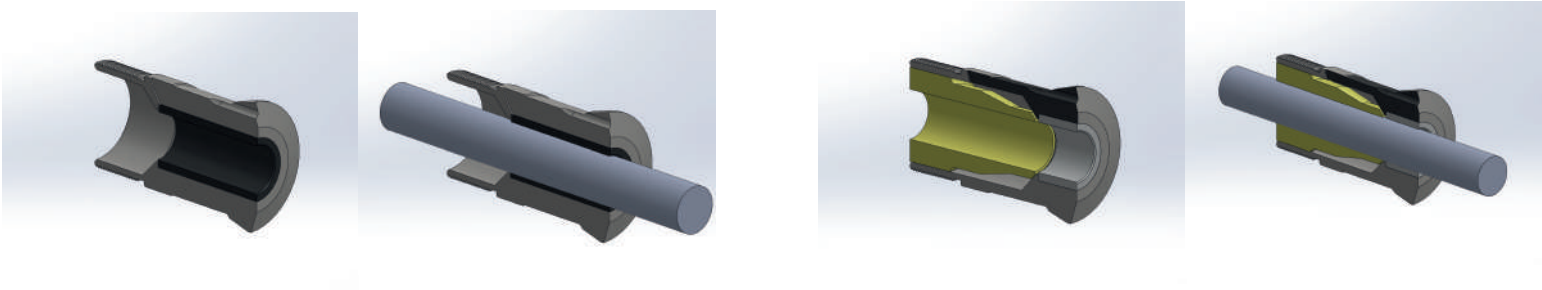
Capacity

Part Nr.	Guiding Dia	Total Length	Thread	Angle	Capacity		
					Round	Hexagon	Square
	ØD	L	M	a°	●	⬡	■
BK-730/6-16	7	30	M6x0.5	16°	4	-	-
BK-944/8-16	9	44	M8X0.5	16°	5,0	4	3
BK-9385/8-16	9	39	M8x0.75	16°	5	4	3
BK-951/8-30	9	51	M8x0.8	30°	5,0	4	3
BK-944/8-16	9	44	M8x0.75	16°	5	4	3
BK-1058/10-12	10	58	M10x0.75	12°	5,5	4	3
BK-1153/100-16	11	53	M10x0.75	16°	7	5	4
BK-1153/10-16	11	53	M10x1	16°	7,0	5	4
BK-1157/10-16	11	57	M10x0.75	16°	7	5	4
BK-11524/10-16	11	52	M10x0.75	16°	7,0	5	4
BK-153/10-16	11	53	M10x0.80	16°	7	5	4
BK-1252/12-30	12	52	M12x1	30°	7,0	6	5
BK-1250/10-16-02	12	50	M10x0.75	16°	7	6	5
BK-1250/10-16-05	12	50	M10x0.75	16°	7,0	6	5
BK-1250/12-30-07	12	50	M12x1	30°	8	6	5
BK-1250/10-30	12	50	M10x0.5	30°	7,0	5	4
BK-1250/12-30-09	12	50	M12x1	30°	8	6	5
BK-13415/12-15	13	42	M12x0.75	15°	8,0	6	5
BK-1464/13-16	14	64	M13x0.75	16°	9	7	6
BK-1462/14-1530	14	62	M14x1	15°30'	8,5	7	6
BK-1554/14-16	15	54	M14x1	16°	10	8	7
BK-1554/14-15	15	54	M14x0.75	15°	8,5	7	6
BK-1650/14-16	16	50	M14x1	16°	10	8	7
BK-1660/14-30	16	60	M14x1	30°	10,0	8	7
BK-1655/16-30	16	55	M16x1	30°	10	8	7
BK-1663/14-1530	16	63	M14x1	15°30'	10,0	8	7
BK-1658/14-16	16	58	M14x1	16°	10	8	7
BK-1659/14-16	16	59	M14x1	16°	10,0	8	7
BK-1659/15-16	16	59	M15x1	16°	11	9	8
BK-16585/14-29	16	59	M14x1	20°	10,0	8	7
BK-1663/14-1630	16	63	M14x1	16°30'	10	8	7
BK-1859/16-30	18	59	M16x1	30°	12,0	10	8
BK-1860/18-30-02	18	60	M18x1	30°	13	10	9
BK-1860/18-30-03	18	60	M18x1	30°	13,0	10	9
BK-1876/18-22	18	76	M18X1	22°	13	10	9
BK-1860/18-30	18	60	M18X1	30°	12,5	10	8
BK-2055/20-30-01	20	55	M20x1	30°	14	11	9
BK-2055/20-30-06	20	55	M20x1	30°	13,0	11	9
BK-2058/18-15	20	58	M18x1	15°	13	11	9
BK-21575/18-12	21	58	M18x1	12°	14,0	11	9
BK-2268/19-16	22	68	M19x1	16°	14	12	10
BK-2270/20-15	22	70	M20x1	15°	15,5	13	11
BK-2268/19-16	22	68	M19X1	16°	15	12	10
BK-2268/22-16	22	68	M22x1	16°	16,0	13	11
BK-2372/22-16	23	72	M22x1	16°	17	14	11
BK-2461/24-30	24	61	M24x1	30°	16,0	13	11



Capacity

Part Nr.	Guiding Dia	Total Length	Thread	Angle	Capacity		
	ØD				L	M	Round
BK-2677/25-16	26	77	M25x1	16°	20	17	14
BK-2671/24-15	26	71	M24X1.5	15°	18,0	15	13
BK-27575/24-12	27	58	M24x1	12°	18	15	12
BK-2881/25-30	28	81	M25x1	30°	20,5	17	14
BK-2882/25-16	28	82	M25x1	16°	21	17	14
BK-2882/27-16	28	82	M27x1	16°	22,0	18	15
BK-3070/28-16	30	70	M28x1	16°	21	17	14
BK-3085/28-16	30	85	M28x1	16°	20,5	17	14
BK-3059/30-15	30	59	M30x1	15°	22	19	16
BK-3059/30-16	30	59	M30x1	16°	22,0	19	16
BK-3068/30-16	30	68	M30x1	16°	22	19	16
BK-3070/30-16	30	70	M30x1	16°	22,0	19	16
BK-30575/30-16	30	58	M30X1	16°	22	19	16
BK-3271/32-30	32	71	M32x1	30°	23,0	19	16
BK-3274/32-30	32	74	M32x1	30°	24	21	17
BK-3370/30-16	33	70	M30x1	16°	26,0	22	18
BK-34875/34-10-02	34	88	M34x1	10°	28	23	19
BK-34875/34-10-03	34	88	M34X1	10°	27,5	23	19
BK-36895/36-13	36	90	M36x1	13°	25	21	18
BK-4072/36-30	40	72	M36x1	30°	29,0	25	21
BK-4072/40-30	40	72	M40x1	30°	30	25	21
BK-4154/38-10	41	54	M38x1	10°	32,0	27	22
BK-4182/38-10-02	41	82	M38x1	10°	32	27	22
BK-4182/38-10-03	41	82	M38X1	10°	32,0	27	22
BK-4254/38-10	41	54	M38X1	10°	30	26	21
BK-4282/4016	42	82	M40x1	16°	33,0	28	23
BK-4282/40-2030	42	82	M40x1	20° 30'	33	28	23
BK-4282/40-20	42	82	M40x1	20°	33,0	28	23
BK-4487-40-20	44	87	M40x1	20°	33	28	23
BK-4582/42-16	45	82	M42x1	16°	36,0	30	25
BK-4692/45-16	46	92	M45x1	16°	38	32	26
BK-4682/45-16	46	82	M45x1	16°	38,0	32	26
BK-4881/48-30	48	81	M48x1.25	30°	38	33	27
BK-4882/46-16	48	82	M46x1	16°	38,0	33	27
BK-4881/46-10	48	81	M46x1	10°	38	33	27





TSUGAMI

TSUGAMI

Machine Type	Guide Bushes	Main Spindle Collet	Sub Spindle Collet
B32		BK-F37.92/47-16 (1536E)	
B007E	BK-1153/10-16	BK-F10.475/155-20 (109E)	BK-F10.475/155-20 (109E)
B074E	BK-1153/10-16	BK-F10.475/155-20 (109E)	BK-F10.475/155-20 (109E)
B012AE/CE	BK-2461/24-30	BK-F22.55/30-15 (140E)	BK-F22.55/30-15 (140E)
B018AE/CE	BK-2461/24-30	BK-F22.55/30-15 (140E)	BK-F22.55/30-15 (140E)
B020AE/CE	BK-2881/25-30	BK-F25.77/35-16 (145E)	BK-F25.77/35-16 (145E)
B0123E/4E/5E	BK-2461/24-30	BK-F22.55/30-15 (140E)	BK-F22.55/30-15 (140E)
B0203E/4E/5E	BK-2881/25-30	BK-F25.77/35-16 (145E)	BK-F25.77/35-16 (145E)
B0385/B0385E Bar Ø32	BK-4282/40-16	BK-F37.92/47-16 (1536E)	BK-F37.92/47-16 (1536E)
B0385/B0385E Bar Ø38	BK-4881/46-10	BK-F48.100/54-15	BK-F48.100/54-15
BH20E/ZE	BK-2881/25-30	BK-F25.77/35-16 (145E)	BK-F25.77/35-16 (145E)
BH38E, Bar Ø32	BK-4282/40-16	BK-F37.92/47-16 (1536E)	BK-F37.92/47-16 (1536E)
BH38E, Bar Ø38	BK-4881/46-10	BK-F48-100/54-15	BK-F48-100/54-15
BN12E	BK-2461/24-30	BK-F22.55/30-15 (140E)	BK-F22.55/30-15 (140E)
BN20E	BK-2881/25-30	BK-F25.77/35-16 (145E)	BK-F25.77/35-16 (145E)
BO126	BK-2677/25-16	BK-F22.55/30-15 (140E)	BK-F22.55/30-15 (140E)
BO206	BK-2881/25-30	BK-F25.77/35-16 (145E)	BK-F25.77/35-16 (145E)
BS 007	BK-1153/10-16	BK-F10.475/155-20 (109E)	BK-F10.475/155-20 (109E)
BS12AE/BE/CE	BK-2461/24-30	BK-F22.55/30-15 (140E)	BK-F22.55/30-15 (140E)
BS125HE/6HE	BK-2461/24-30	BK-F22.55/30-15 (140E)	BK-F22.55/30-15 (140E)
BS18AE/BE/CE	BK-2461/24-30	BK-F22.55/30-15 (140E)	BK-F22.55/30-15 (140E)
BS20AE/BE/CE	BK-2881/25-30	BK-F25.77/35-16 (145E)	BK-F25.77/35-16 (145E)
BS32CE		BK-F37.92/47-16 (1536E)	BK-F37.92/47-16 (1536E)
BS205HE/6HE	BK-2881/25-30	BK-F25.77/35-16 (145E)	BK-F25.77/35-16 (145E)
BS26AE/BE/CE	BK-34875/34-10-02	BK-F32.75/45-15 (161E)	BK-F32.75/45-15 (161E)
BU20E	BK-2881/25-30	BK-F25.77/35-16 (145E)	BK-F25.77/35-16 (145E)
BU26E	BK-34875/34-10-02	BK-F32.75/45-15 (161E)	BK-F32.75/45-15 (161E)
BU/MU 26	BK-34875/34-10-02	BK-F32.75/45-15 (161E)	BK-F32.75/45-15 (161E)
BU/MU 38	BK-4881/46-10	BK-F37.92/47-16 (1536E)	BK-F37.92/47-16 (1536E)
BW07E	BK-1153/10-16	BK-F10.475/155-20 (109E)	
BW12E	BK-2461/24-30	BK-F22.55/30-15 (140E)	BK-F22.55/30-15 (140E)
BW20E	BK-2881/25-30	BK-F25.77/35-16 (145E)	BK-F25.77/35-16 (145E)
HS20	BK-2881/25-30	BK-F25.77/35-16 (145E)	BK-F25.77/35-16 (145E)
HS26	BK-34875/34-10-02	BK-F30.65/38-15(1446E)	BK-F30.65/38-15(1446E)
HS32	BK-4282/40-16	BK-F37.92/47-16 (1536E)	BK-F37.92/47-16 (1536E)
HS207	BK-2881/25-30	BK-F25.77/35-16 (145E)	BK-F25.77/35-16 (145E)

TSUGAMI

Machine Type	Guide Bushes	Main Spindle Collet	Sub Spindle Collet
NB 12	BK -2461/24-30	BK-F22.55/30-15 (140E)	BK-F22.55/30-15 (140E)
NP-4W	BK-1153/10-16	BK-F10.475/155-20 (109E)	
NT-NP 11	BK-1858/16-30	BK-F15.64/21-16 (120E)	
NT-NP 16	BK-2268/19-16	BK-F22.55/30-15 (140E)	
NT-NP 16-II	BK-2461/24-30/1354	BK-F22.55/30-15 (140E)	
NT-NP 17	BK-2461/24-30/1354	BK-F22.55/30-15 (140E)	
NT-NP 20	BK-3271/32-30	BK-F25.77/35-16 (145E)	
NT-NP 20-II	BK-2881/25-30	BK-F25.77/35-16 (145E)	
NT-NP 32	BK-4282/40-16	BK-F37.92/47-16 (1536E)	
P01E	BK-1153/10-16	BK-F10.475/155-20 (109E)	BK-F10.475/155-20 (109E)
P03E	BK-1153/10-16	BK-F10.475/155-20 (109E)	BK-F10.475/155-20 (109E)
P014HE	BK-1153/10-16	BK-F10.475/155-20 (109E)	BK-F10.475/155-20 (109E)
P034HE	BK-1153/10-16	BK-F10.475/155-20 (109E)	BK-F10.475/155-20 (109E)
TMU1E Bar Ø32	BK-4282/40-16	BK-F37.92/47-16 (1536E)	BK-F37.92/47-16 (1536E)
TMU1E Bar Ø38	BK-4881/46-10		BK-F48.100/54-15
S206	BK-2677/25-16	BK-F25.77/35-16 (145E)	BK-F25.77/35-16 (145E)
B0325-B0326	BK-4282/40-16	BK-F37.92/47-16 (1536E)	BK-F37.92/47-16 (1536E)
B0386E	BK-4881/46-10	BK F48.100/54-15	BK-F48.100/54-15
BW209	BK-2677/25-16	BK-F25.77/35-16 (145E)	BK-F25.77/35-16 (145E)
BW329	BK-4282/40-16	BK-F37.92/47-16 (1536E)	BK-F37.92/47-16 (1536E)



CITIZEN

CITIZEN

Machine Type	Guide Bushes	Main Spindle Collet	Sub Spindle Collet
A-20	BK-2882/25-16	BK-F25.77/35-16	BK-F25.77/35-16
B-20	BK-2882/25-16	BK-F25.77/35-16	BK-F25.77/35-16
E-16	BK-2461/24-30	BK-F25.77/35-16	BK-F25.77/35-16
E-20	BK-3271/32-30	BK-F25.77/35-16	BK-F25.77/35-16
E-25	BK-34875/34-10-02	BK-F30.80/42-16	BK-F30.80/42-16
F-12	BK-1859/16-30	BK-F16.64/21-16	BK-F16.64/21-16
F-16	BK-2461/24-30	BK-F25.77/35-16	BK-F25.77/35-16
F-20	BK-2882/25-16	BK-F25.77/35-16	BK-F25.77/35-16
K-12	BK-1859/16-30	BK-F16.64/21-16	BK-F16.64/21-16
L-12	BK-1859/16-30	BK-F16.64/21-16	BK-F16.64/21-16
L-16	BK-2461/24-30	BK-F25.77/35-16	BK-F25.77/35-16
L-20	BK-2882/25-16	BK-F25.77/35-16	BK-F25.77/35-16
L-25	BK-34875/34-10-02	BK-F30.80/42-16	BK-F30.80/42-16
L-32	BK-4282/40-16	BK-F37.92/47-16	BK-F37.92/47-16
M-16	BK-2461/24-30	BK-F25.77/35-16	BK-F25.77/35-16
M-20	BK-2882/25-16	BK-F25.77/35-16	BK-F25.77/35-16
M-32	BK-4282/40-16	BK-F37.92/47-16	BK-F37.92/47-16




STAR

Machine Type	Guide Bushes	Main Spindle Collet	Sub Spindle Collet
B-20	BK-2882/25-16	BK-F25.77/35-16 (145E)	BK-F25.77/35-16 (145E)
ECAS32	BK-4282/40-16	BK-F37.92/47-16 (1536E)	BK-F37.92/47-16 (1536E)
F-25	BK-34875/34-10-02	BK-F30.80/42-16 (157E)	BK-F30.80/42-16 (157E)
JNC-16	BK-2268/22-16	BK-F20.67/28-16 (138E)	BK-F20.67/28-16 (138E)
KJR-16	BK-2268/22-16	BK-F20.67/28-16 (138E)	BK-F20.67/28-16 (138E)
KNC-16/20	BK-2882/25-16	BK-F25.77/35-16 (145E)	BK-F25.77/35-16 (145E)
RNC-10	BK-1650/14-16	BK-F15.64/21-16 (120E)	BK-F15.64/21-16 (120E)
SA-12/16	BK-2268/22-16	BK-F20.67/28-16 (138E)	BK-F20.67/28-16 (138E)
SB-16	BK-2268/22-16	BK-F20.67/28-16 (138E)	BK-F20.67/28-16 (138E)
SE-16	BK-2268/22-16	BK-F20.67/28-16 (138E)	BK-F20.67/28-16 (138E)
SH-12	BK-4282/40-16	BK-F20.67/28-16 (138E)	BK-F20.67/28-16 (138E)
SI-12 NP	BK-2268/22-16	BK-F20.67/28-16 (138E)	BK-F15.64/21-16 (120E)
SR-10J	BK-1650/14-16 (év. 1353)*	BK-F15.64/21-16 (120E)	BK-F15.64/21-16 (120E)
SR-16	BK-2268/22-16	BK-F20.67/28-16 (138E)	BK-F20.67/28-16 (138E)
SR-20J	BK-2882/25-16	BK-F25.77/35-16 (145E)	BK-F25.77/35-16 (145E)
SR-16R	BK-2268/22-16	BK-F20.67/28-16 (138E)	BK-F20.67/28-16 (138E)
SB-20 RG	BK-2882/25-16	BK-F25.77/35-16 (145E)	BK-F25.77/35-16 (145E)
SR-20R	BK-2882/25-16	BK-F25.77/35-16 (145E)	BK-F25.77/35-16 (145E)
SR-38	BK-4882/46-16	BK-F48.94/60-15 (173E)	BK-F48.94/60-15(173E)
SST-16	BK-2268/22-16	BK-F20.67/28-16 (138E)	BK-F20.67/28-16 (138E)
SV-12	BK-2268/22-16	BK-F20.67/28-16 (138E)	BK-F20.67/28-16 (138E)
SV-20	BK-2882/25-16	BK-F25.77/35-16 (145E)	BK-F25.77/35-16 (145E)
SR32J	BK-4282/40-16	BK-F37.92/47-16 (1536E)	BK-F37.92/47-16 (1536E)
SV-32	BK-4282/40-16	BK-F37.92/47-16 (1536E)	BK-F37.92/47-16 (1536E)
SW-7	BK-1650/14-16	BK-F15.64/21-16 (120E)	BK-F15.64/21-16 (120E)
SW-7R	BK-1650/14-16 (év. 1353)	BK-F15.64/21-16 (120E)	BK-F15.64/21-16 (120E)
SW-20	BK-2882/25-16	BK-F25.77/35-16 (145E)	BK-F25.77/35-16 (145E)
VNC-20	BK-2882/25-16	BK-F25.77/35-16 (145E)	BK-F25.77/35-16 (145E)
VNC-32	BK-4282/40-16	BK-F37.92/47-16 (1536E)	BK-F37.92/47-16 (1536E)



HANWHA

Machine Type	Guide Bushes	Main Spindle Collet	Sub Spindle Collet
SL-12 S/H	BK-1858/16-30	BK-F15.64/21-16 (120E) or F16/1076 (1212E)	BK-F15.64/21-16 (120E)
SL-16 S/H	BK-2268/22-16	BK-F22.55/55-30-15(140E)	BK-F22.55/55-30-15(140E)
SL-20 S	BK-2882/25-16	BK-F25.77/35-16 (145E)	BK-F25.77/35-16 (145E)
SL-26 HP II	BK-34875/34-10-02	BK-F32.75/45-15 (161E)	BK-F32.75/45-15 (161E)
SL-26 S/H	BK-34875/34-10-02	BK-F32.75/45-15 (161E)	BK-F32.75/45-15 (161E)
SL-32 HP II	BK-4282/40-16	BK-F37.92/47-16 (1536E)	BK-F37.92/47-16 (1536E)
SL-32 HPD	BK-4282/40-16	BK-F37.92/47-16 (1536E)	BK-F37.92/47-16 (1536E)
SL-32 S/HE	BK-4282/40-16	BK-F37.92/47-16 (1536E)	BK-F37.92/47-16 (1536E)
SL-35 HP	BK-4582/42-16	Special collet	Special collet
STL-38	Special ST-JBS	STF48/81 (173E)	BK-F42.94/55-15 (171E)
XD-12 H	BK-1858/16-30	BK-F15.64/21-16 (120E)	BK-F15.64/21-16 (120E)
XD-12 J	BK-1858/16-30	BK-F16.64/21-16 (1212E)	
XD-16 H	BK-2268/22-16	BK-F22.55/55-30-15(140E)	BK-F22.55/55-30-15(140E)
XD-20 H	BK-2882/25-16	BK-F25.77/35-16 (145E)	BK-F25.77/35-16 (145E)
XD-20 M	BK-2882/25-16	BK-F25.77/35-16 (145E)	BK-F25.77/35-16 (145E)
XD-20 N	(work with collet)	BK-F25.77/35-16 (145E)	BK-F25.77/35-16 (145E)
XD-20 V	BK-2882/25-16	BK-F25.77/35-16 (145E)	BK-F25.77/35-16 (145E)
XDI-20	BK-2882/25-16	BK-F25.77/35-16 (145E)	BK-F25.77/35-16 (145E)
XD-26 H	BK-34875/34-10-02	BK-F32.75/45-15 (161E)	BK-F32.75/45-15 (161E)
XD-32 H	BK-4282/40-16	BK-F37.92/47-16 (1536E)	BK-F37.92/47-16 (1536E)
XD-35	BK-4582/42-16	BK F42.94/55-15 (171E)	
XP-12 S	BK-1858/16-30	BK-F15.64/21-16 (120E)	BK-F15.64/21-16 (120E)
XP-16 S	BK-2268/22-16	BK-F22.55/55-30-15(140E)	BK-F22.55/55-30-15(140E)
XP-20 S	BK-2882/25-16	BK-F25.77/35-16 (145E)	BK-F25.77/35-16 (145E)
XP-26 S	BK-34875/34-10-02	BK-F32.75/45-15 (161E)	BK-F32.75/45-15 (161E)



NEXTURN

Machine Type	Guide Bushes	Main Spindle Collet	Sub Spindle Collet
SA 12 A	BK-1859/16-30	BK- F16.64/21-16	BK-F16.64/21-16
SA 12 A (US)	BK-1860/18-30-02	BK- F16.64/21-16	BK-F16.64/21-16
SA 18 A	BK-2882/25-16	BK- F25.77/35-16	BK-F25.77/35-16
SA 20 D / SA 20 E	BK-2882/25-16	BK- F25.77/35-16	BK-F25.77/35-16
SA 26 D / SA 26 E	BK-34785/34-10-02	BK- F32.75/45-15	BK-F32.75/45-15
SA 32 D / SA 32 E	BK-4282/40-16	BK-F37.92/47-16	BK-F37.92/47-16
SA 38	BK-4282/40-16	BK-F46.92/45-16	BK-F46.92/45-16



TORNOS

Machine Type	Guide Bushes	Main Spindle Collet	Sub Spindle Collet
M-4/ T-4	BK-9385/8-16 (Magic CMF 201)	BK-F8.42/12-16 (101E)	Trans-T
M-7	BK-1153/10-16 (Magic CRD 143)	BK-F10.475/155-20 (109E)	Trans-T
MS-7	BK-1153/10-16 (Magic CRD 143)	BK-F13.64/19-16 (116E)	Trans-T
MR-28/32	BK-3271/32-30	BK-F37.92/47-16 (1536E))	
NAT-125	BK-1650/14-16	BK-F16.64/21-16 (1212E)	
R-10	BK-1650/14-16 (Magic CRA-165)	BK-F15.64/21-16 (120E) / (BK F16.64/21-16 (1212E))	Trans-T
R-16	BK-2268/19-16	BK-F20.67/28-16 (138E)	
CT-20	BK-2882/25-16	BK-F25.77/35-16 (145E)	BK-F25.77/35-16 (145E)
DECO-8 SP	(work with collet)	STW15/3 (ST3213E)	BK-F13.64/19-16 (116E)
DECO-10	BK-1650/14-16	BK-F13.64/19-16 (116E)	BK-F13.64/19-16 (116E)
DECO-13	BK-2461/24-30	BK-F20.54/26-15 (136E)	F20/201 (136E)
DECO-20	BK-2881/25-30	BK-F25.77/35-16 (145E)	BK-F25.77/35-16 (145E)
DECO-26 (32)	BK-34875/34-10-02 (BK 4282/40-16)	BK-F25.77/35-16 (145E) / (BK F30.65/38-15(1446E))	BK-F25.77/35-16 (145E) / (F30/101 1446E)
DELTA-12 version III	BK-2677/25-16 (605)	BK-F20.54/26-15 (136E) / (F13 or F10)	F20/201 (136E) / (F13 or F10)
DELTA-20	BK-2677/25-16 (BK 2881/25-30)	BK-F25.77/35-16 (145E) / (F13/357 (116E))	F25/64 (145E) / (F13 or F10)
DELTA-20 version III	BK-2677/25-16 (BK 2881/25-30)	BK-F25.77/35-16 (145E) / (F13/357 (116E))	F25/64 (145E) / (F13 or F10)
ENC-74/75	BK-1650/14-16	BK-F13.64/19-16 (116E)	
ENC-163/164/167	BK-2461/24-30 (BK 34875/34-10-02)	BK-F20.54/26-15 (136E)	BK-F20.54/26-15 (136E)
ENC-262/264	TOP-200	BK-F30.65/38-15(1446E)	BK-F30.65/38-15(1446E)
EVODECO-16	BK-2461/24-30	BK-F20.54/26-15 (136E)	BK-F20.54/26-15 (136E)
GT-13	BK-1858/16-30	BK-F16.64/21-16 (1212E)	BK-F16.64/21-16 (1212E)
MICRO-7	BK-1153/10-16	BK-F13.64/19-16 (116E) / (F10/86 (109E))	BK-F13.64/19-16 (116E)/(BK F10.475/155-20 109E)
SIGMA-8	(work with collet)		
SIGMA-20	BK-34875/34-10-02 (1357)	BK-F30.65/38-15(1446E) / (F20 or F25)	BK-F30.65/38-15(1446E) / (STF20 or STF25)
ST-26	BK-34875/34-10-02	BK-F30.65/38-15(1446E)	BK-F30.65/38-15(1446E)
TOP-100	TOP-100	BK-F15.64/21-16 (120E)	BK-F15.64/21-16 (120E)
TOP-200	TOP-200	BK-F30.65/38-15(1446E)	BK-F30.65/38-15(1446E)
GAMA 205-206	BK-2677/25-16	BK-F25.77/35-16 (145E)	BK-F25.77/35-16 (145E)



GOODWAY

Machine Type	Guide Bushes	Main Spindle Collet	Sub Spindle Collet
SW 20	BK-2882/25-16	BK-F25.77/35-16	BK-F25.77/35-16
SW 32	BK-4282/40-16	BK-F37.92/47-16	BK-F37.92/47-16



NOMURADS

NOMURADS			
Machine Type	Guide Bushes	Main Spindle Collet	Sub Spindle Collet
NN-10EX2	BK-1650/14-16	BK-F15.64/21-16 (120E) or BK F15.47/22-20 (1212E)	BK-F15.64/21-16 (120E)
NN-16SB7	BK-2268/22-16	BK-F20.67/28-16	BK-F20.67/28-16
NN-20J3FN/NN-20J3XB	BK-2882/25-16	BK-F25.77/35-16	BK-F25.77/35-16
NN-25UB8K	BK-34875/34-10-02	BK-F32.75/45-15	BK-F32.75/45-15
NN-32UB8K2/NN-32YB3 / NN-32YB3XB	BK-4282/40-16	BK-F37.92/47-16	BK-F37.92/47-16
NN-38UB8	BK-4692/45-16		



TSUGAMI

CITIZEN

star



**INDEX
TRAUB**

DMG MORI

Miyano



MANURHIN KMX



NOMURADS

NEXTURN



JINN FA

WOODWAY



POLY GIM

WIVIA

